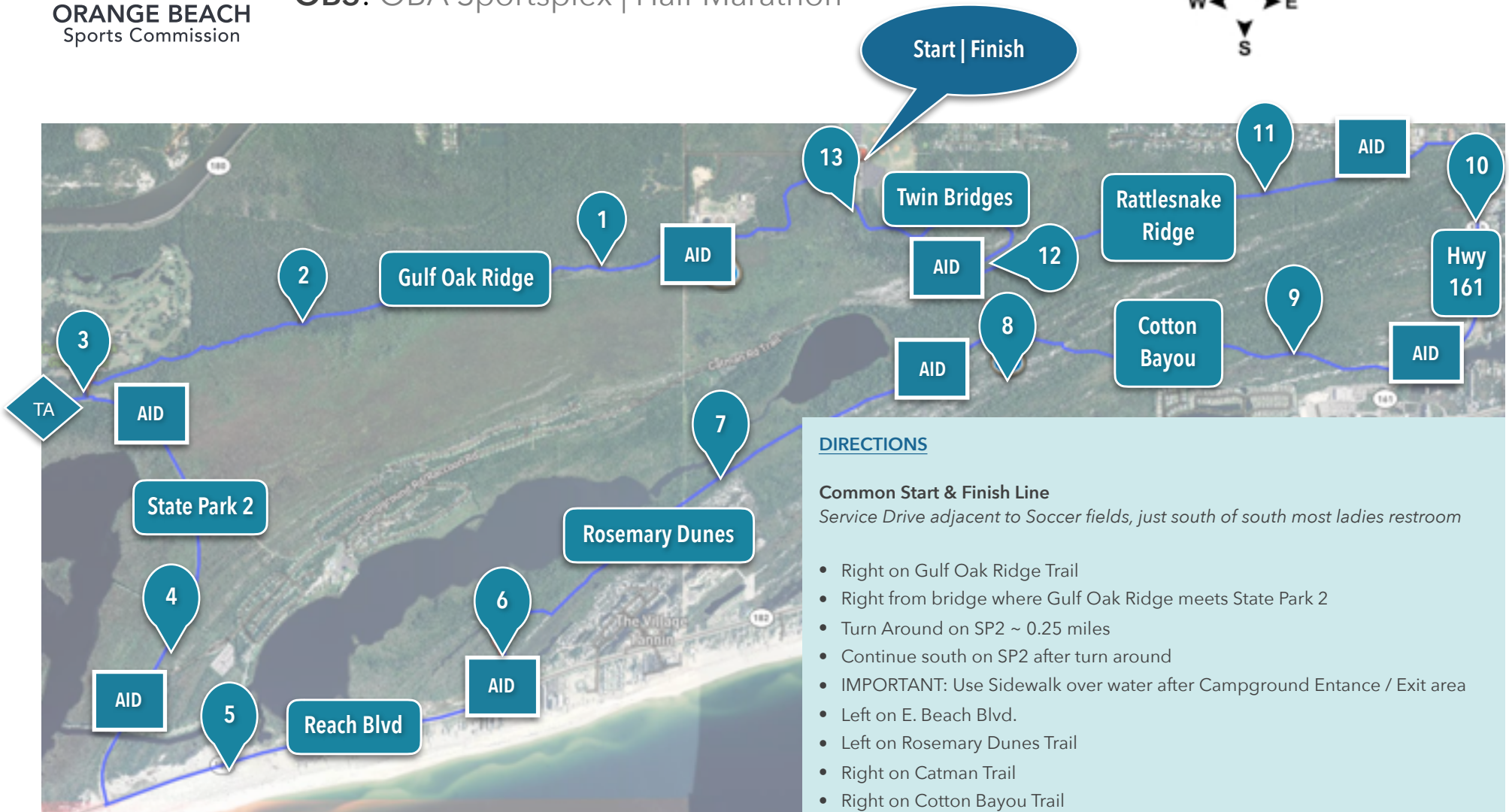
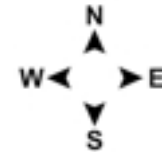




**GULF SHORES &  
ORANGE BEACH**  
Sports Commission

## OB3: OBA Sportsplex | Half Marathon



### DIRECTIONS

#### **Common Start & Finish Line**

*Service Drive adjacent to Soccer fields, just south of south most ladies restroom*

- Right on Gulf Oak Ridge Trail
- Right from bridge where Gulf Oak Ridge meets State Park 2
- Turn Around on SP2 ~ 0.25 miles
- Continue south on SP2 after turn around
- **IMPORTANT:** Use Sidewalk over water after Campground Entrance / Exit area
- Left on E. Beach Blvd.
- Left on Rosemary Dunes Trail
- Right on Catman Trail
- Right on Cotton Bayou Trail
- Left on Sidewalk at Hwy 161
- Left on Road to Rattlesnake Ridge Trail
- Left on Rattlesnake Ridge Trail
- Right on Twin Bridges Trail
- Finish at same location as Start

Online Map Link: <http://www.gmap-pedometer.com?r=7298832>



**GULF SHORES &  
ORANGE BEACH**  
Sports Commission

## OB3: OBA Sportsplex | Half Marathon

### Course Details

#### DIRECTIONS

##### Common Start & Finish Line

*Service Drive on west side of Sportsplex Soccer fields, just south of south most ladies restroom*

- Right on Gulf Oak Ridge Trail
- Right from bridge where Gulf Oak Ridge meets State Park 2
- Turn Around on SP2 ~ 0.25 miles
- Continue south on SP2 after turn around
- IMPORTANT: Use Sidewalk over water after passing Campground Entrance / Exit area
- Left on E. Beach Blvd.
- Left on Rosemary Dunes Trail
- Right on Catman Trail
- Right on Cotton Bayou Trail
- Left on Sidewalk at Hwy 161
- Left on Road to Rattlesnake Ridge Trail
- Left on Rattlesnake Ridge Trail
- Right on Twin Bridges Trail
- Finish at same location as Start

#### COURSE VOLUNTEER NEEDS

- Right turn on Gulf Oak Ridge
- AID STATION at Powerline Trail
- Right from bridge at SP2
- Turn around on SP2
- AID STATION at SP2 near Gulf Oak Ridge
- AID STATION on SP2 at bridge over water south of Campground Entrance
- Left from SP2 onto Beach Blvd
- Right Beach Blvd to Rosemary Dunes
- AID STATION Rosemary Dunes
- AID STATION Rosemary before Catman
- Right Rosemary onto Catman
- Right Catman onto Cotton Bayou
- AID STATION Cotton Bayou
- Left Cotton Bayou onto Hwy 161 sidewalk
- Straight across Marina Road Trail Head
- Left from Hwy 161 sidewalk to Rattlesnake
- AID STATION at Rattlesnake trail head by Fire Station
- Left from service road onto Rattlesnake
- AID STATION Rattlesnake at Twin Bridges

#### COURSE VOLUNTEER NEEDS

##### (continued)

- Right Rattlesnake onto Twin Bridges
- Continue straight where Sportsplex trail head meets Twin Bridges
- Right to finish after crossing final bridge behind Sportsplex south soccer field

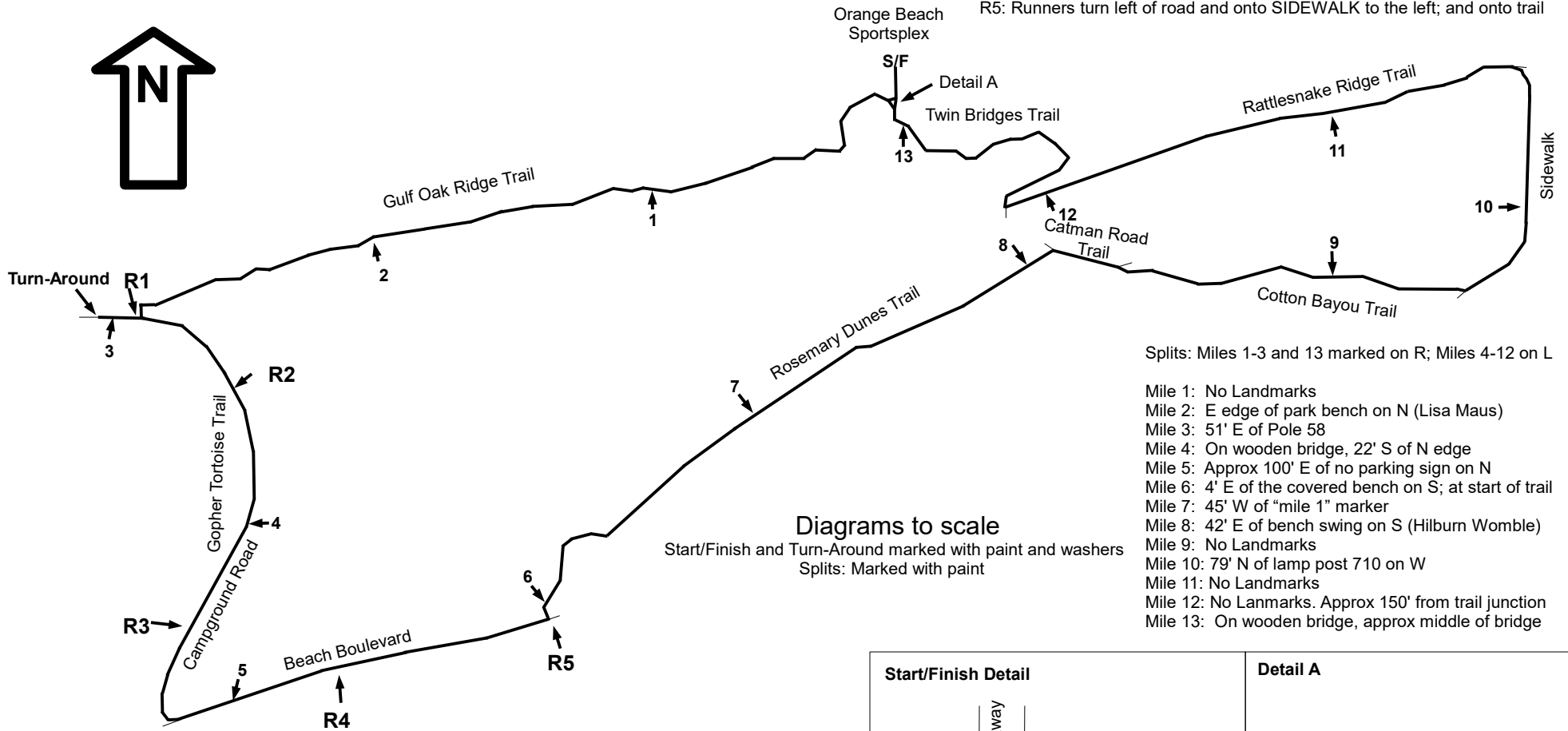
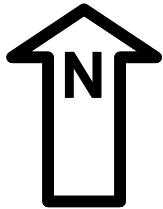
#### COURSE POLICE / CITY NEEDS

- GSP at SP2 where runners turn around north of Gulf Oak Ridge Trail bridge exit
- GSP / GSPD at SP2 & Beach Blvd
- OBA police east of turn onto Rosemary
- OBA police where Hwy 161 meets Cotton Bayou trail head entrance
- OBA police at Marina Road trail head entrance, where runners stay straight
- Warning digital signs on Hwy 161 north for south bound traffic & on Beach Blvd east of Rosemary Dunes Trail Head

**Police Required = 5; Aid Station = 8 with minimum 2 volunteers 250 & under runners | 4 for over 250 runners; Minimum Course Direction = 14**

# Orange Beach Half Marathon Course

## Orange Beach, AL



Restrictions:  
 R1: See turn-around detail  
 R2: Runners stay on pavement (left) around junction of Bear Creek Tail  
 R3: On Campground Road, runners stay on the W bike path.  
 R4: Beach Boulevard is restricted to the N side bike lane only  
 R5: Runners turn left of road and onto SIDEWALK to the left; and onto trail

Splits: Miles 1-3 and 13 marked on R; Miles 4-12 on L

- Mile 1: No Landmarks
- Mile 2: E edge of park bench on N (Lisa Maus)
- Mile 3: 51' E of Pole 58
- Mile 4: On wooden bridge, 22' S of N edge
- Mile 5: Approx 100' E of no parking sign on N
- Mile 6: 4' E of the covered bench on S; at start of trail
- Mile 7: 45' W of "mile 1" marker
- Mile 8: 42' E of bench swing on S (Hilburn Womble)
- Mile 9: No Landmarks
- Mile 10: 79' N of lamp post 710 on W
- Mile 11: No Landmarks
- Mile 12: No Lanmarks. Approx 150' from trail junction
- Mile 13: On wooden bridge, approx middle of bridge

Diagrams to scale  
 Start/Finish and Turn-Around marked with paint and washers  
 Splits: Marked with paint

Measured by Jon Bowie (Daphne, AL 251-209-0887)  
 jnbowie@gmail.com 29 September 2018

